

 Join Whatsapp

[www.freejobalert.com](http://www.freejobalert.com)  
**Free Job Alert**  
.com

 Download App

MHT CET 2023  
Question Paper  
Shift 1 19th  
May(Biology)



Join Whatsapp

www.freejobalert.com  
**Free Job Alert**  
.com



Download App

1. Amazon forest produces percentage of total oxygen of earth's atmosphere.

- (A) 20%
- (B) 30%
- (C) 40%
- (D) 50%

2. Which of the following statements are correct with respect to embryonic development in humans?

- i. Cleavage is holoblastic and indeterminate.
  - ii. There is no change in overall size of zygote upto morula.
  - iii. Embryo called blastocyst remains floating in uterine cavity for 2 to 4 days, after its entry into uterus.
  - iv. Embryo proper develops from trophoblast cells and cells of Rauber.
  - v. Zona pellucida remains intact around embryo till late gastrula stage.
- Choose the correct option:

- (A) i and ii only
- (B) iv and v only
- (C) i, ii and iii only
- (D) i, ii, iii and iv only

3. Louis Pasteur disproved the theory of

- (A) special creation
- (B) panspermia
- (C) abiogenesis
- (D) biogenesis



Join Whatsapp

www.freejobalert.com  
**Free Job Alert**  
.com



Download App

4. Volatile substances, present in spices, are excreted through

- (A) lungs
- (B) liver
- (C) kidneys
- (D) skin

5. Which one of the following is INCORRECT with respect to genetic drift?

- (A) It is any alteration in allele frequency.
- (B) It occurs in a population by pure chance.
- (C) They are random or directionless.
- (D) Effect of genetic drift has no significance in small populations.

6. A diffused nervous system is observed in

- (A) sponge
- (B) cnidarian
- (C) flatworm
- (D) earthworm

7. Archaeopteryx lithographica, a fossilized crow size toothed bird, was found from Jurassic rocks in

- (A) Galapagos Islands
- (B) Germany
- (C) South Africa
- (D) Java and Peking

8. In a normal healthy person, glomerular filtrate entering the PCT does NOT contain

- i. Plasma proteins
- ii. Blood corpuscles
- iii. Glucose
- iv. Vit. C
- v. NaCl

Choose the correct option:

- (A) i and iii only
- (B) i and ii only
- (C) iii and v only
- (D) ii and iii only

9. Which one of the following is the palindromic sequence recognized by the enzyme EcoRI?

- (A) 5'.....A-G-C-T...3' / 3'.....T-C-G-A.....5'
- (B) 5'.....G-G-A-T-C-C.....3' / 3'.....C-C-T-A-G-G.....5'
- (C) 5'.....G-A-A-T-T-C.....3' / 3'.....C-T-T-A-A-G.....5'
- (D) 5'.....G-T-C-G-A-C.....3' / 3'.....C-A-G-C-T-G.....5'

10. Percentage of CO<sub>2</sub> transport by RBCs and plasma, in the form of carbonic acid, NaHCO<sub>3</sub> ions and carbaminohaemoglobin respectively is

- (A) 7%, 70%, 23%
- (B) 70%, 23%, 7%
- (C) 23%, 7%, 70%



Join Whatsapp

[www.freejobalert.com](http://www.freejobalert.com)  
**Free Job Alert**  
.com



Download App

(D) 7%, 23%, 70%

11. As per new fuel policy implemented by the government, the norms are set to reduce \_\_\_\_\_ and \_\_\_\_\_ from petrol and diesel.

(A) S, CO<sub>2</sub>

(B) S, aromatic content

(C) Nitrous oxide, CO

(D) SO<sub>2</sub>, CO

12. Which is the main organ of plant responsible for absorption of water and minerals?

(A) Root

(B) Stem

(C) Leaf

(D) Fruit

13. Heart beat decreases in the following conditions EXCEPT

(A) acidosis and alkalosis

(B) hypoxia

(C) elevated levels of K<sup>+</sup> and Na<sup>+</sup> in blood

(D) increase in level of hormone epinephrine

14. Match types of biofertilizers in

Column I Biofertilizers		Column II Examples	
i.	Nitrogen fixing	a.	<i>Pseudomonas striata</i>
ii.	Phosphate solubilizing	b.	actinobacteria
iii.	Compost making	c.	mycorrhizae
iv.	Fungal biofertilizer	d.	<i>Klebsiella</i>

A) i-d, ii-a, iii-c, iv-b

(B) i-d, ii-a, iii-b, iv-c

(C) i-a, ii-d, iii-c, iv-b

(D) i-a, ii-d, iii-b, iv-c

15. Which of the following are low threshold substances with respect to selective reabsorption?

(A)  $\text{Ca}^{++}$ ,  $\text{Na}^+$  and  $\text{Cl}^-$ .

(B) Water, sulphates and nitrates.

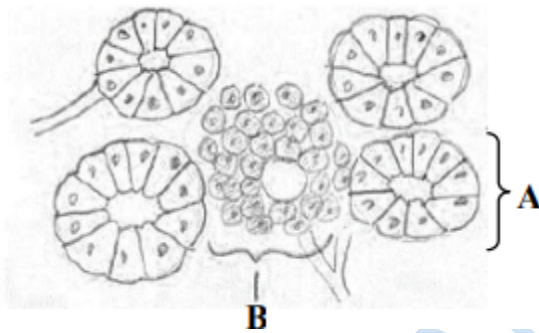
(C) Glucose and amino acids.

(D)  $\text{K}^+$  and Vit. C.

16. Which one of the following is NOT the reason of indigestion?

- (A) Food poisoning
- (B) Over-eating
- (C) Roughage
- (D) Spicy food

17. In the following diagram of T.S. of pancreas, identify 'A' and 'B'.



	A	B
(A)	Acinar cells	Cells of Islets of Langerhans
(B)	Goblet cells	C-cells
(C)	Kupffer cells	Leydig cells
(D)	Hepatic cells	J G cells
(D)	Hepatic cells	J G cells

i. All enzymes are proteinaceous.

ii. Enzyme becomes more active at the temperature of 60° to 70°C.

iii. Enzymes have one or two active sites where substrate binds with the enzyme.

iv. Any increase or decrease in specific pH, enzyme activity is always enhanced.

v. Enzymes remain active to catalyze again after completion of first reaction.

- (A) ii and iv only
- (B) i and v only
- (C) i, iii and v only
- (D) ii, iii and v only

19. Match the

Column I Animals		Column II Excretory substances	
i.	Adult Frog	a.	Guanine
ii.	Land snail	b.	Urea
iii.	Tadpole of frog	c.	Uric acid
iv.	Spider	d.	Ammonia

- A) i-b, ii-c, iii-a, iv-d
- (B) i-b, ii-c, iii-d, iv-a
- (C) i-c, ii-b, iii-d, iv-a
- (D) i-c, ii-b, iii-a, iv-d

20. \_\_\_\_\_ is a problem of synthesizing few alpha ( $\alpha$ ) and beta ( $\beta$ ) globin molecules in haemoglobin.

- (A) Phenylketonuria
- (B) Thalassemia



Join Whatsapp

www.freejobalert.com  
**Free Job Alert**  
.com



Download App

(C) Sickle cell anaemia

(D) Haemophilia

21. Which hormone is used to increase fruit size and bunch length of grapes?

(A) Auxins

(B) Gibberellins

(C) Cytokinins

(D) Ethylene

22. Semen contains \_\_\_\_\_ and \_\_\_\_\_ that are antibacterial in nature, hence it provides natural immunity.

(A) lysozyme and serum amyloid P

(B) spermine and zinc

(C) interferons and cytokines

(D) C-Reactive Protein and alpha-1-acid glycoprotein

23. Nasal cavity is divisible into right and left nasal chambers by

(A) thyroid cartilage

(B) mesethmoid cartilage

(C) tracheal cartilage

(D) thyrohyoid membrane

24. Which one of the following is NOT a part of anther wall?

(A) Tapetum

(B) Endothecium

(C) Integument

(D) Middle layers



Join Whatsapp

www.freejobalert.com  
**Free Job Alert**  
.com



Download App

25. Which one of the following is NOT a homologous pair with respect to human male and female reproductive systems, respectively?

- (A) Vasa efferentia --- fallopian tubes
- (B) Scrotum --- labia majora
- (C) Penis --- Clitoris
- (D) Bulbourethral glands --- Vestibular glands

26. Identify the correct sequence of events of pollen pistil interaction given below.

- i. pollination
  - ii. syngamy
  - iii. siphonogamy
  - iv. triple fusion
  - v. porogamy
- Choose the correct option:

- (A) ii → iii → i → v → iv
- (B) ii → i → iii → v → iv
- (C) ii → iii → v → i → iv
- (D) ii → v → iii → i → iv

27. The first transgenic plant produced was

- (A) Bt cotton
- (B) Bt brinjal
- (C) Tomato
- (D) Tobacco

28. Given below are two statements.



Join Whatsapp

www.freejobalert.com  
**Free Job Alert**  
.com



Download App

Statement I: Stratification is the horizontal distribution of different plants and animals on land

Statement II: Forest is a good example of stratification. In the light of the above statements, choose the most appropriate answer:

- (A) Both statement I and statement II are correct.
- (B) Both statement I and statement II are incorrect.
- (C) Statement I is correct but statement II is incorrect.
- (D) Statement I is incorrect but statement II is correct.

29. Select the correct match regarding formed elements of blood.

- (A) Polycythemia --- ratio of RBCs to total blood volume
- (B) Hematocrit --- moving of WBCs out of the capillary walls
- (C) Phagocytosis --- destruction of antigen-antibody complexes, bacteria etc
- (D) Leukemia --- increase in number of RBCs

30. Which of the following cranial nerves does NOT contain parasympathetic nerve fibres?

- (A) Facial
- (B) Trigeminal
- (C) Glossopharyngeal
- (D) Vagus

31. Edges of large lake or a beach is a perfect example of

- (A) stratification
- (B) zonation
- (C) xeric succession



Join Whatsapp

www.freejobalert.com  
**Free Job Alert**  
.com



Download App

(D) grassland

32. Given below are two statements.

Statement I: Habitat consists of numerous niches.

Statement II: Niche is an area where species lives and prospers. In the light of above statements choose the correct option:

(A) Both statement I and statement II are correct.

(B) Both statement I and statement II are incorrect.

(C) Statement I is correct but statement II is incorrect.

(D) Statement I is incorrect but statement II is correct.

33. Which of the following nucleic acids carries activated amino acid up to the site of protein synthesis?

(A) DNA

(B) mRNA

(C) rRNA

(D) tRNA

34. The result of which cross illustrates Mendel's law of segregation?

(A)  $Tt \times tt$

(B)  $Rr \times RR$

(C)  $Rr \times Rr$

(D)  $tt \times tt$

35. When two pink flowered snapdragon plants are crossed, what will be the phenotypic ratio in F<sub>2</sub> plants?

(A) 1:1

(B) 3:1



Join Whatsapp

www.freejobalert.com  
**Free Job Alert**  
.com



Download App

(C) 1:2:1

(D) 3:2:1

36. Which of the following are found in the portal area of liver?

i. Branch of hepatic portal vein

ii. Branch of hepatic vein

iii. Branch of bile duct

iv. Branch of hepatic artery Select the correct option:

(A) i and iii only

(B) ii and iii only

(C) i, iii and iv only

(D) i, ii and iv only

37. The lowermost cell of the suspensor towards the embryo is known as

(A) haustoria

(B) hypophysis

(C) epicotyl

(D) hypocotyl

38. Match the following conditions associated with mental disorders in column I with their respective meanings in column II.



Join Whatsapp

www.freejobalert.com  
**Free Job Alert**  
.com



Download App

Column I Animals		Column II Excretory substances	
i,	Bullimia	a,	loss of memory
ii,	Anorexia nervosa	b.	extreme overindulgence in food
iii,	Amnesia	c.	sadness and inactivity in life
iv,	Depression	d.	emotional aversion to food

(A) i-b, ii-d, iii-a, iv-c

(B) i-d, ii-a, iii-b, iv-c

(C) i-a, ii-c, iii-d, iv-b

(D) i-c, ii-a, iii-b, iv-d

39. Which one of the following is correct regarding special features of Neanderthal man?

i. He used hide to cover his body.

ii. It's fossil was first found in Germany.

iii. He had semi erect posture.

iv. He existed during Miocene epoch.

v. He constructed flint tools.

(A) i and ii only

(B) i, ii, iii and iv only

(C) i, ii and v only

(D) ii, iii, iv and v only



Join Whatsapp

www.freejobalert.com  
**Free Job Alert**  
.com



Download App

40. The cells, which release secretion to stimulate adjacent cells in the organism, are known as

- (A) paracrines
- (B) autocrines
- (C) endocrines
- (D) pheromones

41. Given below are two statements.

Statement I: Tobacco, Marijuana and other drugs may cause infertility in both men and women.

Statement II: Nicotine blocks the production of sperms and decreases the size of testicles. In the light of above statements, choose the correct answer:

- (A) Both statement I and statement II are correct.
- (B) Both statement I and statement II are incorrect.
- (C) Statement I is correct but statement II is incorrect.
- (D) Statement I is incorrect but statement II is correct.

42. In glycolysis, the two ATP molecules are consumed during

- (A) Step ① and ②
- (B) Step ① and ④
- (C) Step ① and ③
- (D) Step ① and ⑤

43. Nearly 70% of natural nitrogen fixation is carried out by

- (A) physical process
- (B) Prokaryotes
- (C) eukaryotes

(D) Haber Bosh process

44. Match the following with respect to different categories of red list.

Column I		Column II
i.	Extinct	a. species whose members survive only in captivity
ii.	Extinct in wild	b. Rapid population decline of 50% to more than 70% over the previous 10 years
iii.	Endangered	c. species in which the last individual has died
iv.	Vulnerable	d. Rapid population decline of 30% to more than 50% over the previous 10 years
iv.	Vulnerable	d. Rapid population decline of 30% to more than 50% over the previous 10 years

(A) i-d, ii-b, iii-c, iv-a

(B) i-c, ii-a, iii-b, iv-d

(C) i-c, ii-d, iii-b, iv-a

(D) i-b, ii-c, iii-a, iv-d

45. The electron carriers and enzymes of electron transport chain are arranged on inner mitochondrial membrane to form how many complexes?

(A) Six

(B) Five

(C) Four

(D) Three

46. Bryophytes like mosses are able to grow in small amount of soil occupies the \_\_\_\_\_ stage in the xerarch succession.

- (A) pioneer
- (B) second
- (C) third
- (D) fourth seral

47. Match the following

Column I		Column II
i.	Malaria	a. drugs like nystatin, fluconazole, itraconazole,
ii.	Dermatophytosis	b. drugs like metronidazole and Tinidazole.
iii.	Amoebiasis	c. combination of artesunate, sulfadoxine, pyrimethamine etc
iv.	Filariasis	d. diethyl – carbamazine citrate tablets.
iv.	Filariasis	d. diethyl – carbamazine citrate tablets.

- (A) i-d, ii-c, iii-a, iv-b
- (B) i-c, ii-a, iii-b, iv-d
- (C) i-b, ii-d, iii-c, iv-a
- (D) i-a, ii-b, iii-d, iv-c

48. Breakdown of alveoli and shortness of breath is observed in

- (A) emphysema
- (B) laryngitis
- (C) pneumonia
- (D) asthma



Join Whatsapp

www.freejobalert.com  
**Free Job Alert**  
.com



Download App

49. Tubular secretion is the only mode of excretion in

- (A) cartilagenous fishes
- (B) marine bony fishes
- (C) fresh water bony fishes
- (D) marine birds

50. Which hormone is NOT secreted by placenta?

- (A) hCG
- (B) Inhibin
- (C) Estrogen
- (D) Progesterone

51. Select the correct match of scientists and their respective discoveries.

- (A) Karl Landsteiner in 1900-A, B, O blood groups.
- (B) Decastello and Sturli in 1902 Concept of immunity
- (C) Edward Jenner - Rh factor (Antigen 'D')
- (D) Landsteiner and Wiener in 1940 'AB' blood group system.

52. Maturation of both androecium and gynoecium in a homogamous flower helps in

- (A) cross pollination
- (B) self pollination
- (C) apomixis
- (D) polyembryony



Join Whatsapp

www.freejobalert.com  
**Free Job Alert**  
.com



Download App

53. In tissue culture technique morphogenic differentiation of shoot and root is controlled by the interaction and ratio of

- (A) auxin and gibberellins
- (B) gibberellins and cytokinin
- (C) auxin and cytokinin
- (D) ethylene and ABA

54. The unit of measurement of water potential is

- (A) Bars only
- (B) Bars or atmospheres only
- (C) Bars or atmospheres or Pascals only
- (D) Bars or atmospheres or Pascals or Joules only

55. Which of the following organisms can respire anaerobically as well as aerobically?

- (A) Fishes
- (B) Yeasts
- (C) Lichens
- (D) Algae

56. Given below are two statements:

Statement I: Minerals are absorbed by plants with or without expenditure of energy.

Statement II: Mineral ion absorption is independent of water absorption.  
In the light of the above statements, choose the most appropriate answer:

- (A) Both statement I and statement II are true.
- (B) Both statement I and statement II are false.

(C) Statement I is true but statement II is false.

(D) Statement I is false but statement II is true.

57. Proteins like Keratin of hair consists of polypeptide chain arranged

(A) like a pleated sheet

(B) like a spiral helix

(C) in linear sequence

(D) in twisted and folded sequence

58. In human females, the pair of hormones produced ONLY during pregnancy IS

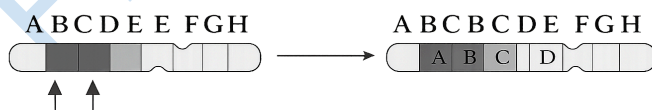
(A) ACTH, ADH

(B) hCG, HPL

(C) hCG, MSH

(D) GH, HPL

59. Observe the following diagram and select the correct chromosomal aberration



(A) Deletion



Join Whatsapp

www.freejobalert.com  
**Free Job Alert**  
.com



Download App

- (B) Duplication
- (C) Inversion
- (D) Translocation

60. The gene for the production of an iron storage protein, ferritin is isolated from A and transferred to B.

	Column A	Column B
(A)	soybean	rice
(B)	soybean	potato
(C)	alfalfa	banana
(D)	tomato	tobacco

61. Which one of the following is NOT a IntraUterine Device?

- (A) Lippes loop
- (B) Progestasert
- (C) Nexplanon
- D) Cu-T and Cu-7

62. The concept of central dogma in retroviruses is given by

- (A) Temin and Baltimore
- (B) Meselson and Stahl
- (C) Watson and Crick
- (D) MacCarty and MacLeod

63. Which of the following statement/s is/are correct with respect to generation and conduction of nerve impulse?

- i. The resting potential difference is -70mvs



Join Whatsapp

www.freejobalert.com  
**Free Job Alert**  
.com



Download App

- ii. The voltage gated  $\text{Na}^+$  and  $\text{K}^+$  channels operate together and are self closing.
- iii. At the peak of action potential, the potential difference rises to +30 to +60mvs
- iv. In medullated nerve fibre, the action potential is conducted as wave of membrane depolarization.
- v. The resting potential is maintained by especially closure of gated channels of  $\text{Na}^+$  and  $\text{K}^+$ .

- (A) i only
- (B) iii and iv only
- (C) ii, iv and v only
- (D) i, iii and v only

64. Generally vernalization is effective at \_\_\_\_\_ stage in annual plants.

- (A) floral bud
- (B) flower
- (C) fruit
- (D) seedling

65. Which one of the following pairs are fresh water carps?

- (A) Cirrhina mrigala and Grass carp
- (B) Harpadon and Stromateus
- (C) Sardinella and common carp
- (D) Rastrelliger and silver carp



Join Whatsapp

[www.freejobalert.com](http://www.freejobalert.com)  
**Free Job Alert**  
.com



Download App

66. Pyramid of energy is always upright as energy is \_\_\_\_\_ at each trophic level.

- (A) gained
- (B) lost
- (C) produced
- (D) constant

67. Given below are two statements.

Statement I: Stenohaline animals tolerate wide range of salt concentration.

Statement II: Euryhaline animals are capable of handling narrow range of salt concentration. In the light of above statements, choose the most appropriate answer:

- (A) Both statement I and statement II are correct.
- (B) Both statement I and statement II are incorrect.
- (C) Statement I is correct but statement II is incorrect.
- (D) Statement I is incorrect but statement II is correct.

68. The part of the plant used in tissue culture is

- (A) callus
- (B) explant
- (C) inoculum
- (D) embryo



Join Whatsapp

www.freejobalert.com  
**Free Job Alert**  
.com



Download App

69. Human growth hormone is obtained from transgenic tobacco plant by introducing the gene in the

- (A) mitochondria
- (B) chloroplast
- (C) nucleus
- (D) nucleolus

70. Caecum is a small blind sac present at the junction of

- (A) ileum and colon
- (B) duodenum and jejunum
- (C) jejunum and ileum
- (D) colon and rectum

71. A colourblind man marries a woman with normal vision, what is the probability of their son being colourblind?

- (A) 0%
- (B) 0.5%
- (C) 0.75%
- (D) 1%

72. The secondary developing follicles of ovary secrete hormone

- (A) relaxin
- (B) inhibin
- (C) estrogen
- (D) secretin



Join Whatsapp

www.freejobalert.com  
**Free Job Alert**  
.com



Download App

73. Given below are the two statements.

Statement 1: Earth's surface re-emits the heat in the form of infrared radiations.

Statement II: Atmospheric gases like CO<sub>2</sub> and CH<sub>4</sub> prevent the escaping of infrared radiations to space causing reheating of earth. In the light of above statements, choose the correct answer:

- (A) Both statement I and statement II are correct.
- (B) Both statement I and statement II are incorrect.
- (C) Statement I is correct but statement II is incorrect.
- (D) Statement I is incorrect but statement II is correct.

74. 'Wobble-hypothesis' explains which one of the following properties of genetic code?

- (A) Universal
- (B) Non-ambiguous
- (C) Commaless
- (D) Degeneracy

75. How many pollen mother cells are involved in formation of 8 pollen tetrads?

- (A) 4
- (B) 8
- (C) 16
- (D) 32



Join Whatsapp

[www.freejobalert.com](http://www.freejobalert.com)  
**Free Job Alert**  
.com



Download App

76. Select the correct statements regarding external structure of human heart.

- i. Pulmonary trunk arising from right ventricle is present on anterior surface.
- ii. Aorta arising from left ventricle is present on posterior surface.
- iii. Externally the atria are separated from ventricles by coronary sulcus.
- iv. Ligamentum arteriosum is the remnant of ductus arteriosus.
- v. Pulmonary veins open into left atrium along the anterior surface.

(A) i, iii, and iv

(B) ii, iii, and iv

(C) iii, iv and v

(D) i, ii and iii

77. Secondary roots develop from

(A) cortex

(B) epidermis

(C) endodermis

(D) pericycle

78. The scotopic vision is developed through the stimulation of

(A) cone cells only

(B) rod cells only

(C) cone and rod cells only

(D) cone and pigment cells only



Join Whatsapp

www.freejobalert.com  
**Free Job Alert**  
.com



Download App

79. Lymph contains

- (A) WBCs and intercellular fluid
- (B) RBCs and platelets
- (C) RBCs and WBCs
- (D) Proteins and RBCs

80. Capacitation process of sperms involves following changes EXCEPT

- (A) Acrosome membrane becomes thin
- (B) Fertilizin antifertilizin interaction takes place
- (C) Calcium ions enter the sperms
- (D) Sperm tails begin to show rapid whiplash movements

81. Which hormone secreted by pituitary gland is under predominant inhibitory control from hypothalamus?

- (A) MSH
- (B) Prolactin
- (C) Oxytocin
- (D) Gonadotropin

82. The tiger census in our national parks is often based on

- (A) the actual count of individuals
- (B) the number on the collar around their neck
- (C) pugmarks and faecal pellets
- (D) the actual photographs



Join Whatsapp

www.freejobalert.com  
**Free Job Alert**  
.com



Download App

83. Arrange and select the following events in correct sequence during measurement of Blood pressure by sphygmomanometer.

- i. Pulsatile sound disappears.
- ii. Cuff is inflated to block brachial artery by external pressure.
- iii. First pulsatile sound is heard indicating systolic pressure.
- iv. Pressure in the cuff is slowly lowered.
- v. Cuff is wrapped tightly around upper arm.

(A) v → ii → ii → iii → i

(B) iv → ii → i → iii → v

(C) iii → v → i → ii → iv

(D) i → v → ii → iii → iv

84. Given below are the two statements.

Statement-I: Only one strand in the transcription unit functions as template and is called antisense strand.

Statement-II: The coding strand of transcription unit is called sense strand. In the light of above statements choose the correct answer:

- (A) Both statement-I and statement-II are true.
- (B) Both statement-I and statement-II are false.
- (C) Statement-I is true but statement-II is false.
- (D) Statement-I is false but statement-II is true.



Join Whatsapp

[www.freejobalert.com](http://www.freejobalert.com)  
**Free Job Alert**  
.com



Download App

85. Who among the following has coined the term 'chemiosmosis' for the transfer of protons accompanied with synthesis of ATP?

- (A) Blackman
- (B) Hatch and Slack
- (C) Peter Mitchell
- (D) Calvin and Benson

86. Following are Indian buffalo breeds EXCEPT,

- (A) Mehsana and Jaffarabadi
- (B) Murrah and Nagpuri
- (C) Gir and Sindhi
- (D) Surati and Nili

87. Cuticular transpiration occurs by

- (A) imbibition
- (B) diffusion
- (C) endo-osmosis
- (D) exo-osmosis

88. Which of the following is the site for Krebs cycle during aerobic respiration?

- (A) Cytoplasm
- (B) Outer membrane of mitochondria
- (C) Inner membrane of mitochondria
- (D) Matrix of mitochondria



Join Whatsapp

www.freejobalert.com  
**Free Job Alert**  
.com



Download App

89. Nature's carrying capacity (K) for a species means

- (A) the total number of individuals in a population
- (B) beyond which no further growth is possible in that habitat
- (C) the amount of resources available for its growth
- (D) the minimum population density in that habitat

90. In the alimentary canal of man, HCl provides acidic pH (pH 1.8) for action of

- (A) trypsin
- (B) pepsin
- (C) chymotrypsin
- (D) enterokinase

91. The sequence of nitrogen bases of one strand of DNA determines the sequence of bases of other strand. This is because

- (A) there is specific pairing between adenine with guanine and cytosine with thymine
- (B) purines and pyrimidines are linked by Hydrogen bonds
- (C) DNA molecule forms a helical structure
- (D) the two strands of DNA are complementary

92. If cell 'A' is having osmotic pressure = 10 bars, turgor pressure = 5 bars and cell 'B' is having osmotic pressure = 30 bars and turgor pressure = 10 bars then, the flow of water occurs

- (A) from cell 'A' to cell 'B'
- (B) from cell 'B' to cell 'A'
- (C) from both cell 'A' to cell 'B' to cell 'A'
- (D) in neither direction

93. Match the human diseases/health condition

Column I		Column II
i.	Parturition	a. Erythropoietin
ii.	Cancer	b. $\alpha$ - Antitrypsin
iii.	Anaemia	c. Interferons
iv.	Emphysema	d. Relaxin

(A) i-a, ii-b, iii-c, iv-d

(B) i-d, ii-c, iii-a, iv-b

(C) i-b, ii-a, iii-d, iv-c

(D) i-d, ii-a, iii-b, iv-c

94. Match column I with column II

Column I		Column II
i.	Glucose	a. reserve food in plants
ii.	Fructose	b. component of cell wall
iii.	Cellulose	c. fuel of iiving cell
iv.	Starch	d. fruit sugar

(A) i-d, ii-c, iii-b, iv-a



Join Whatsapp

www.freejobalert.com  
**Free Job Alert**  
.com



Download App

(B) i-c, ii-d, iii-b, iv-a

(C) i-c, ii-a, iii-d, iv-b

(D) i-c, ii-d, iii-a, iv-b

95. Which one of the following reactions occur during process of solubilization in Biogas production?

(A) Carbohydrates and proteins are converted into simple sugars and amino acids respectively.

(B) Acetic acid or formic acid is converted into methane, CO<sub>2</sub> and H<sub>2</sub>O.

(C) Simple organic material is converted into formic acid or acetic acid.

(D) Simple sugars and amino acids are converted into carbohydrates and proteins.

96. Outbreeding devices are developed in angiosperms to avoid

(A) autogamy

(B) allogamy

(C) fertilization

(D) seed formation

97. Which structure acts as a transducer, converting sound vibrations into nerve impulses?

(A) Organ of Corti

(B) Cochlea

(C) Crista

(D) Sacculle

98. The genotype of vestigial wings in *Drosophila* is

(A) *vgst*

(B) vg

(C) vgno(D) vg ni

99. Match the type of population interaction in column I with their signs given in column II.

Column I		Column II	
		Species A	Species B
i.	Mutualism	a. +	+
ii.	Commensalism	b. +	0
iii.	Parasitism	c. +	-
iv.	Amensalism	d. -	0

(A) i-c, ii-d, iii-a, iv-b

(B) i-d, ii-c, iii-b, iv-a

(C) i-a, ii-b, iii-c, iv-d

(D) i-a, ii-d, iii-b, iv-c


100. During translation in protein synthesis, binding of codon and anticodon occurs by \_\_\_\_\_ bond.

(A) peptide

(B) phosphodiester

(C) hydrogen

(D) glycosidic

 Join Whatsapp

[www.freejobalert.com](http://www.freejobalert.com)  
**Free Job Alert**  
.com

 Download App

FreeJobAlert.com